



EuroVelo

the European cycle route network

Adam Bodor
Advocacy and EuroVelo Director

Monza, 30th April 2017

Rue Franklin, 28 1000 Brussels, Belgium Phone: +32 2 880 92 74 Fax: +32 2 880 92 75 office@ecf.com

www.ecf.com

Content

1. The role and importance of EuroVelo and the needs of cycle tourists
2. The organization of EuroVelo
3. How we manage (change) EuroVelo, the European cycle route network?
4. The EuroVelo toolkit

Content

1. The role and importance of EuroVelo and the needs of cycle tourists
2. The organization of EuroVelo
3. How we manage (change) EuroVelo, the European cycle route network?
4. The EuroVelo toolkit

Cycle tourism has changed...



...and moved to the mainstream.



Cycling tourism industry – on the current level of cycling

European Parliament Study:

- 2.3 billion cycle tourism trips per year in Europe, of which 20.4 million include overnight stays!
- Average spend on day trips **is almost €16.**
- For overnight stays it is **estimated to be €353 per trip.**
- The total economic impact of cycling tourism in Europe is **€44 billion per year**



Cycling tourism industry – the added value of EuroVelo

European Parliament Study:

- 60 million cycle tourism trips per year on EuroVelo, of which 14.5 million include overnight stays!
- The total economic impact of EuroVelo in Europe is €7 billion per year when it is fully developed



We need to improve all route components, to satisfy our customers



The needs of the cycle tourist

Good public transport connections with cycle carriage



The needs of the cycle tourist

Cycling tourists need attractive, safe and comfortable routes



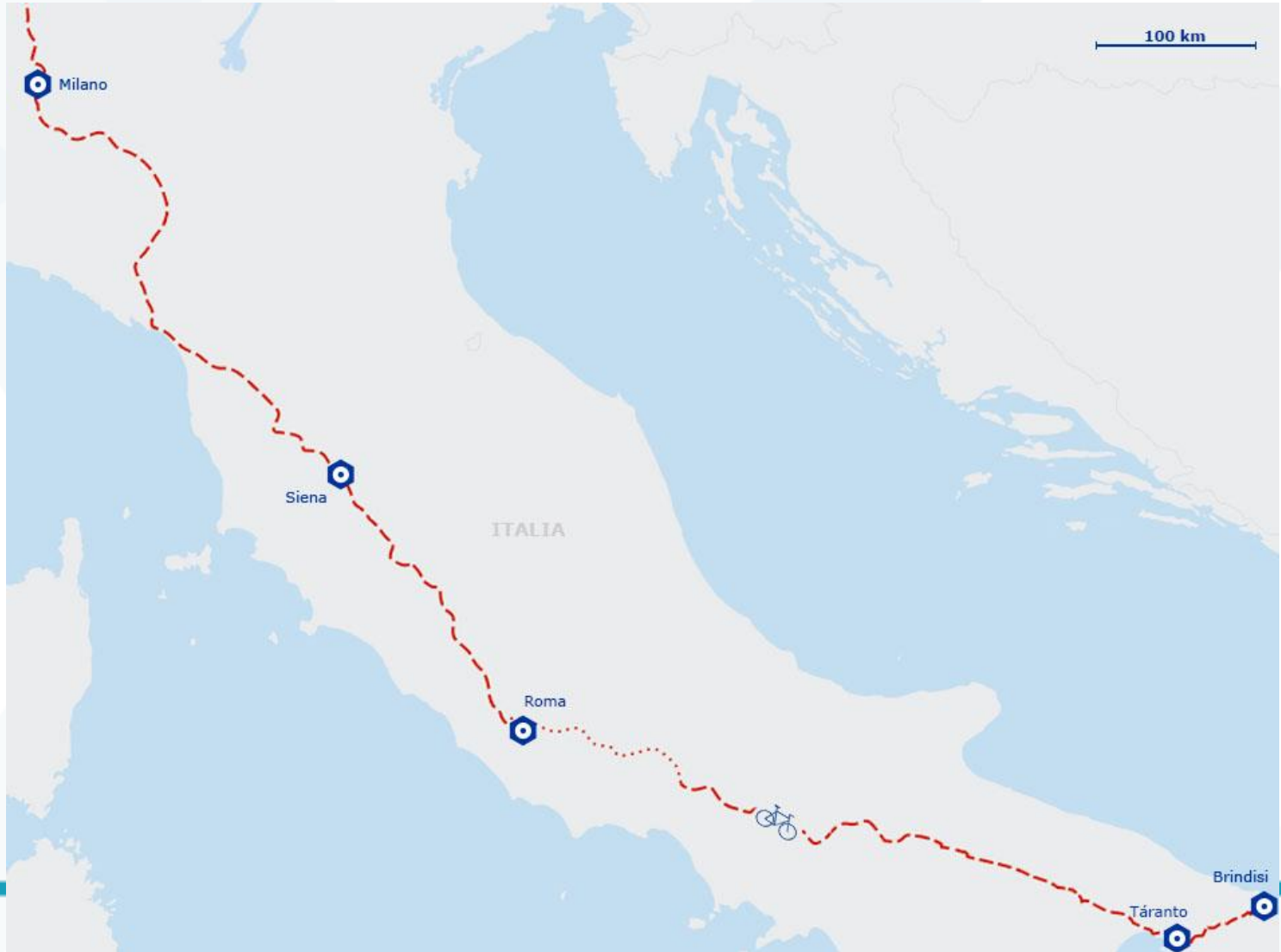
The needs of the cycle tourist



- National routes
- Regional routes
- Local routes



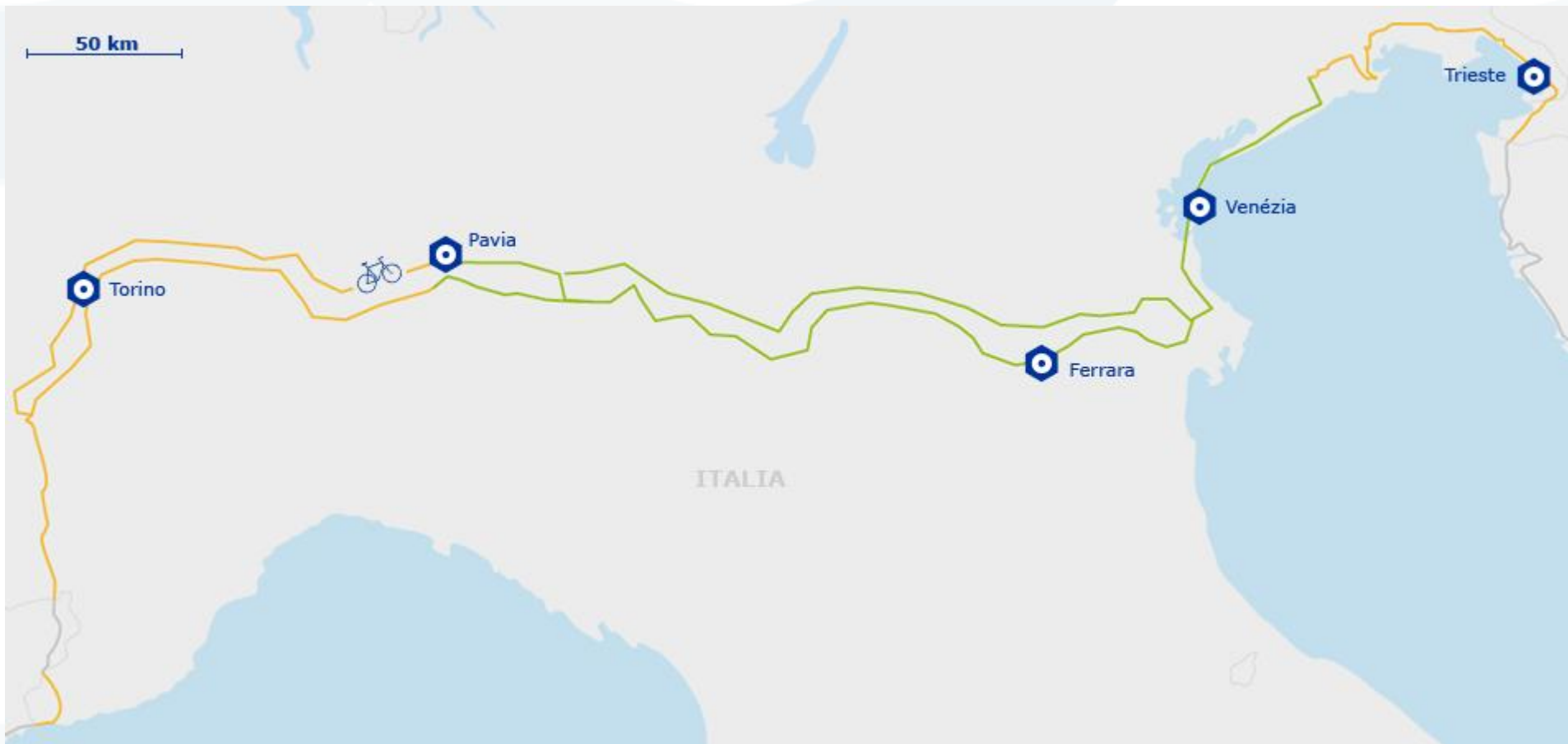
EuroVelo5



EuroVelo7



EuroVelo8





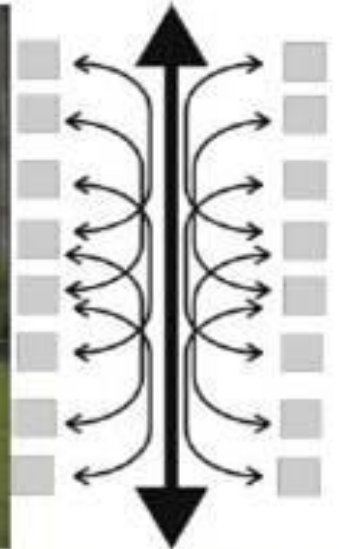
The cycle route network of the Netherlands



The system of cycle routes



Cycle highways



Cycle path



www.eci.com

Cycle lane



Advisory lane, bus/bike lane, advanced stop line



Shared Space



www.ecf.com

High or low traffic public roads



www.ect.com

Greenways

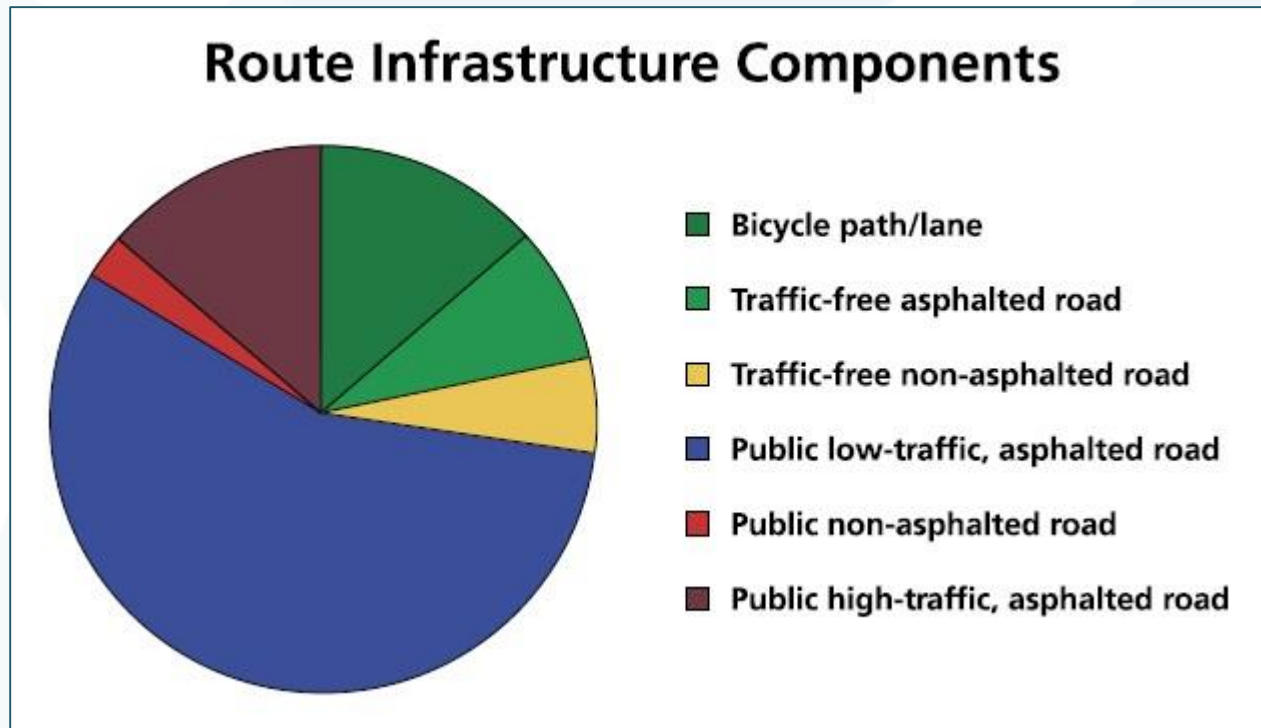


Agricultural, forestry, water management roads



The needs of the cycle tourist

EuroVelo, the European cycle route Network



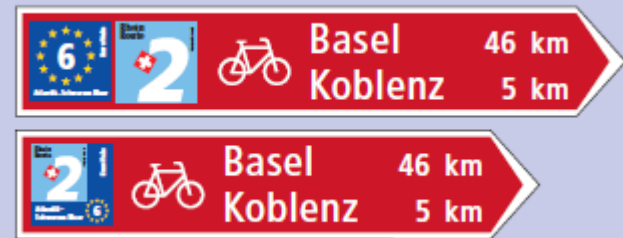
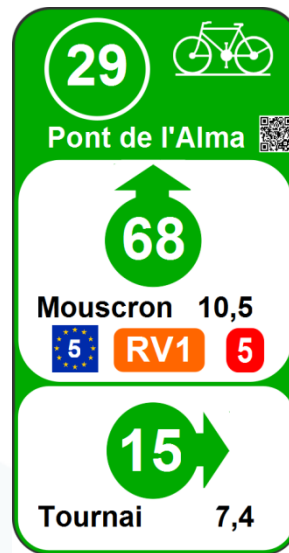
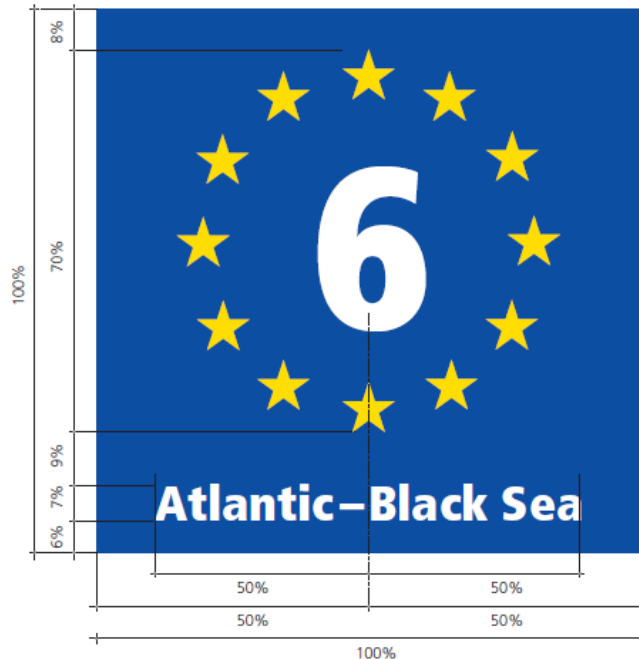
The needs of the cycle tourist

Complete and consistent signing according the national standards



The solutions for the cycle tourist

Integration of EuroVelo signs



Route information panels



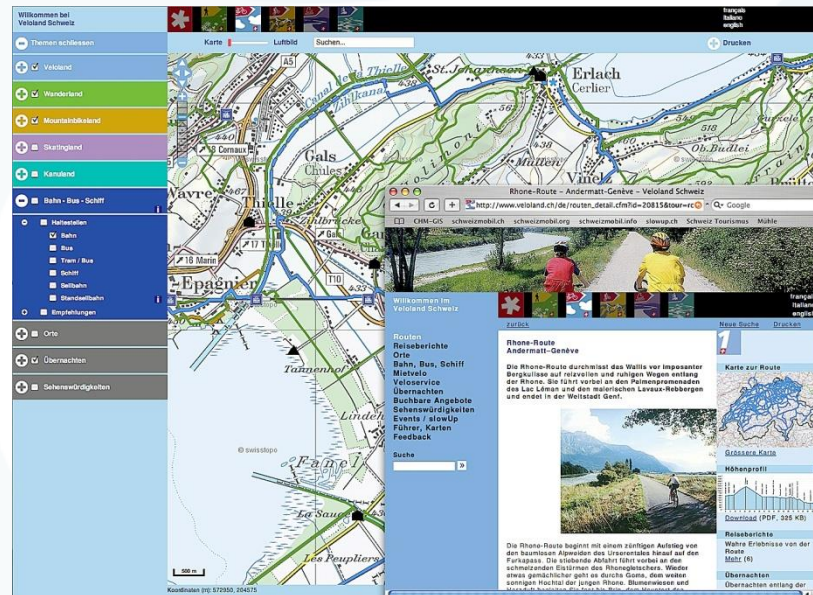
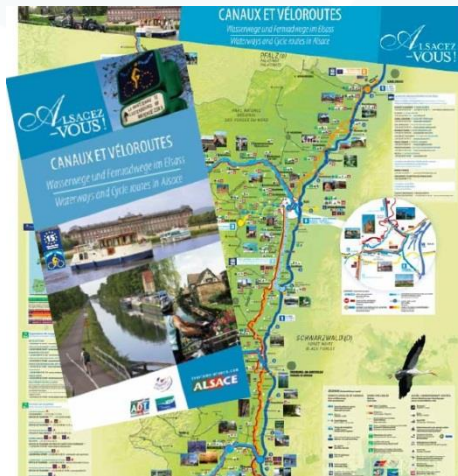
The needs of the cycle tourist

Controlled, high-quality cycling friendly services

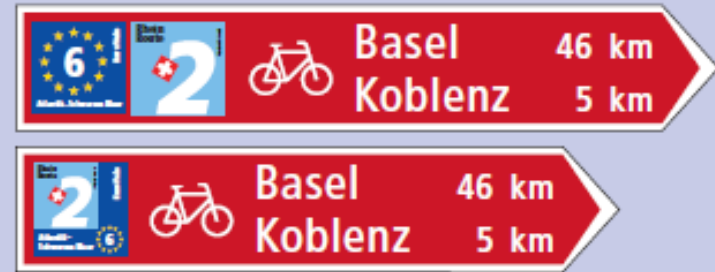


The needs of the cycle tourist

Up-to-date and easily accessible information and promotional tools.



We need to improve all route components, to satisfy our customers



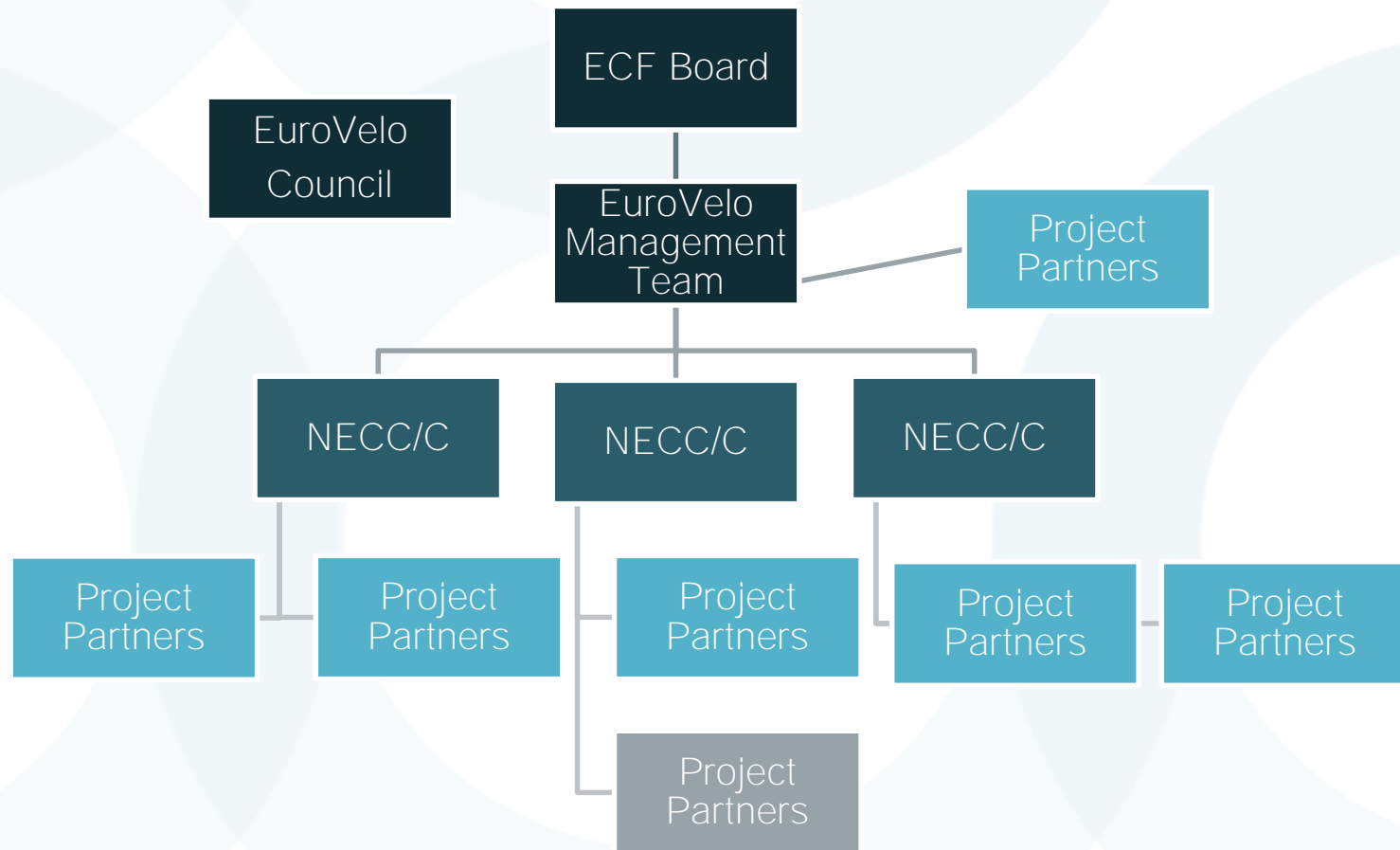
The development cycle...



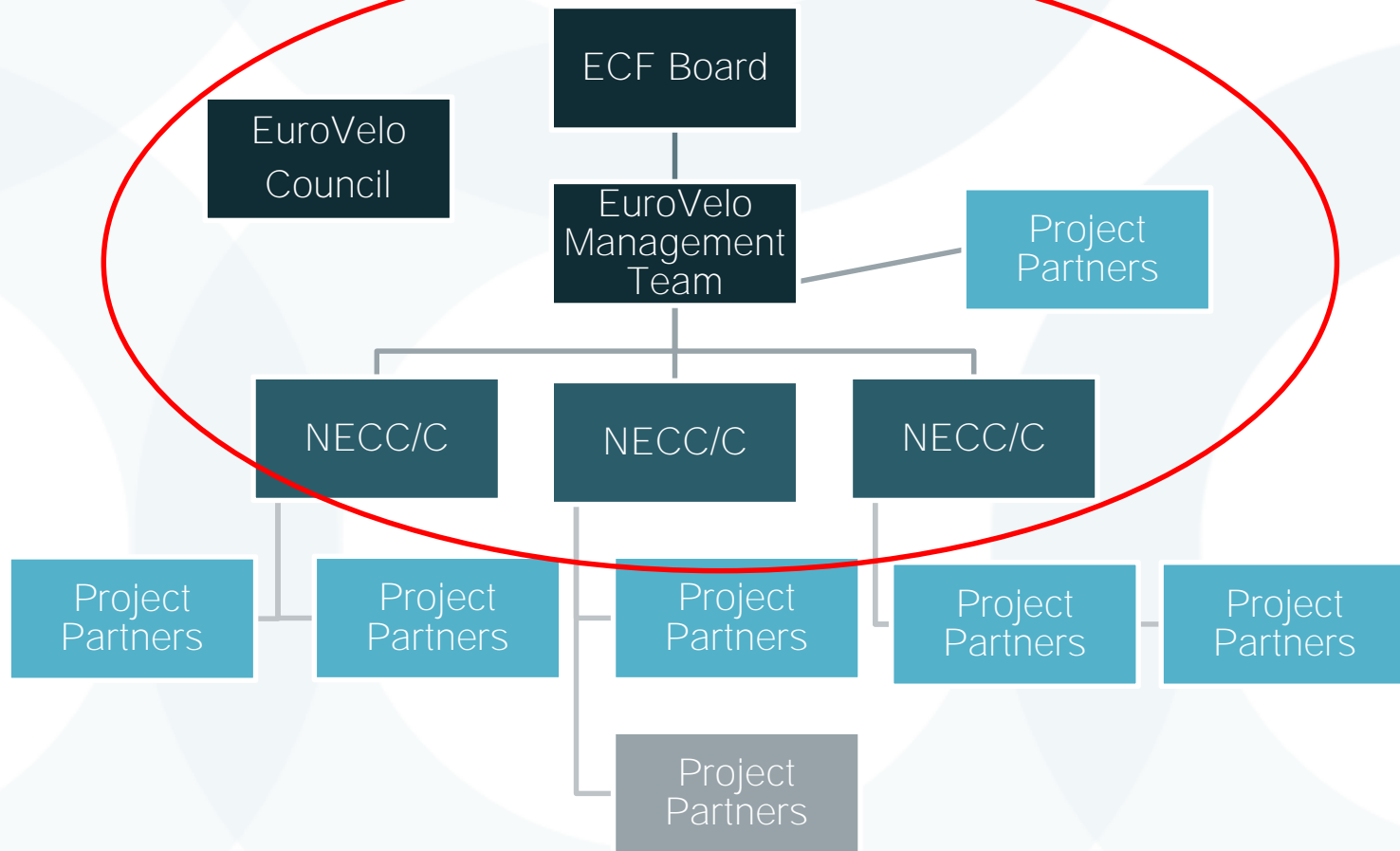
Content

1. The role and importance of EuroVelo and the needs of cycle tourists
2. The organization of EuroVelo
3. How we manage (change) EuroVelo, the European cycle route network?
4. The EuroVelo toolkit

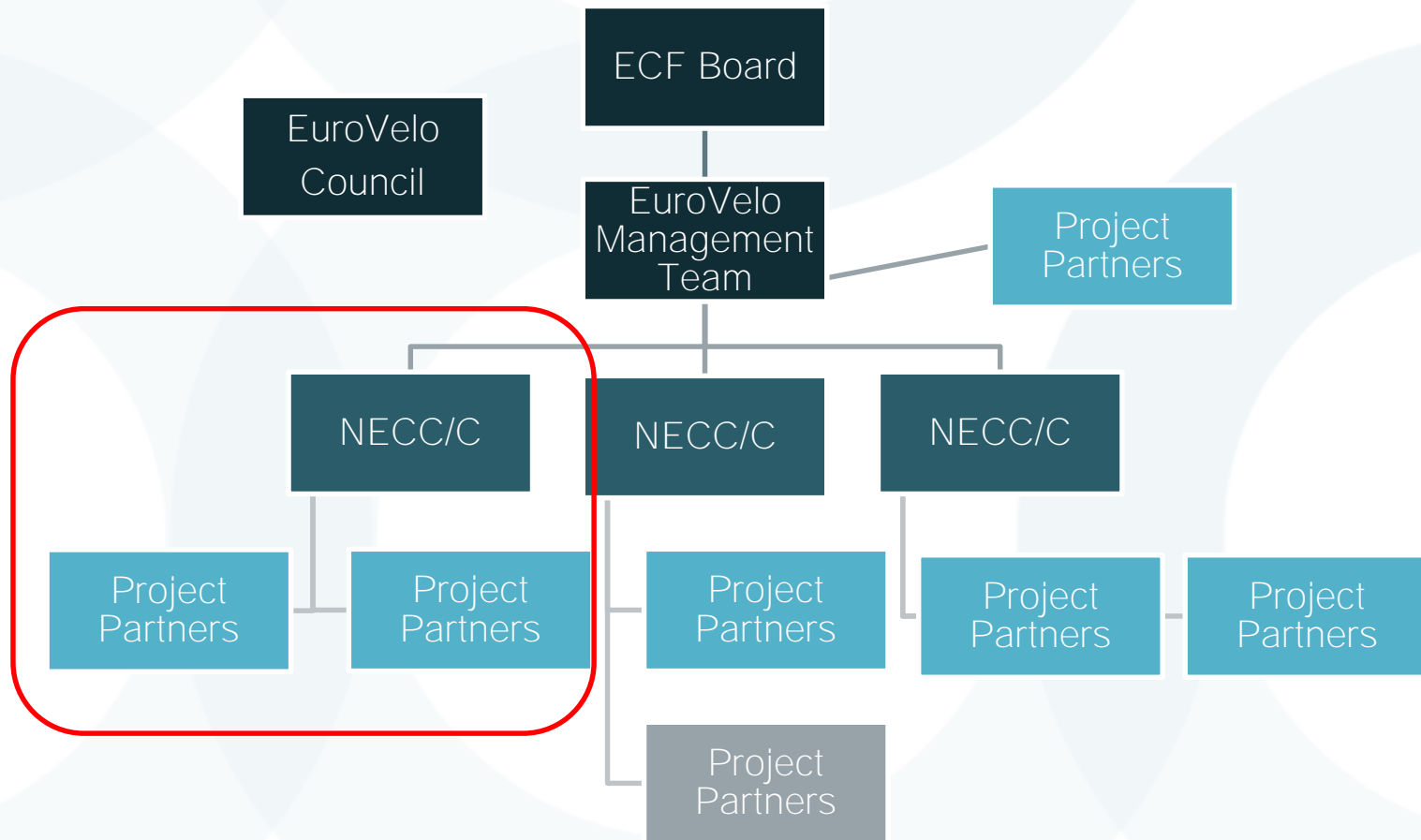
EuroVelo organisation



EuroVelo organisation – European level



EuroVelo organisation – National level



EuroVelo National Coordination



Solutions for coordination

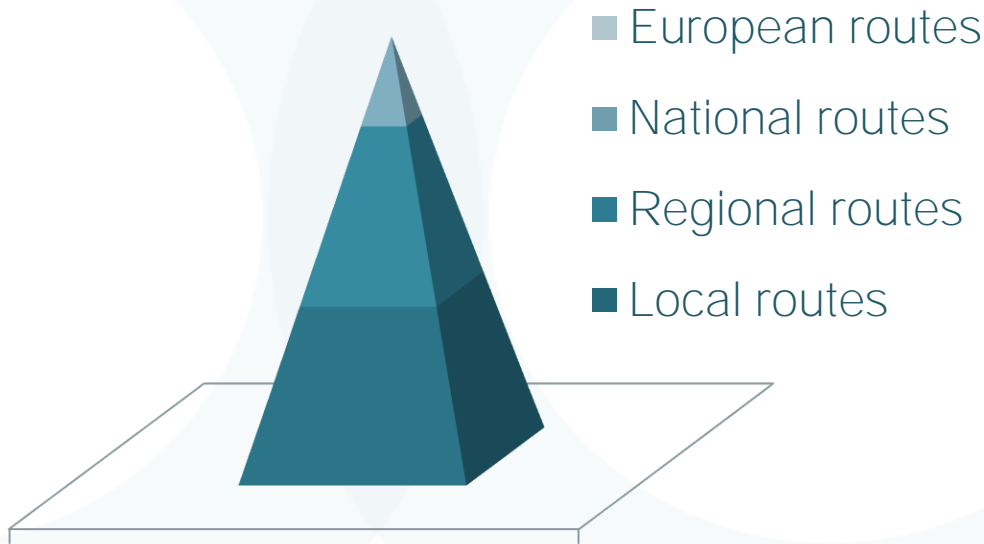
- National EuroVelo Coordinators (NEC) – single organisation - temporary solution
- National EuroVelo Coordination Centers (NECCs) - consortia - permanent solution

EuroVelo National Coordination



Ideal situation

Coordination of national routes and EuroVelo routes are in the same hands and cover the whole country



Who should do the coordination work on the national level?



Solutions for coordination

- National EuroVelo Coordinators (NEC) – single organisation - temporary solution
- National EuroVelo Coordination Centers (NECCs) - consortia - permanent solution

Members of an NECC

- Public authorities (ministries, agencies etc.) responsible for transport, tourism, regional development
- Public transport companies
- Private enterprises (tour operators etc.)
- NGO`s

NECC: The Netherlands



hét startpunt van elke fietstocht

Nederland Fietsland is een initiatief van Stichting Landelijk Fietsplatform

contact | webshop | printen

zoeken

Fietsen in ...

Knooppuntroutes

LF-routes

Fietsvakantie

Fietzers Welkom!

Meer over ..

Home > Landelijke Fietsroutes > Overzicht LF-routes

Overzicht LF-routes



Ook handig voor vakantiefietsers

- ▶ Stel zelf je paklijst samen
- ▶ Fietzers Welkom! kwaliteitslabel
- ▶ Bordje weg? Meld het!
- ▶ Recreatieve fietsrouteplanner
- ▶ Fietsvervoer en verhuur
- ▶ Webwinkel



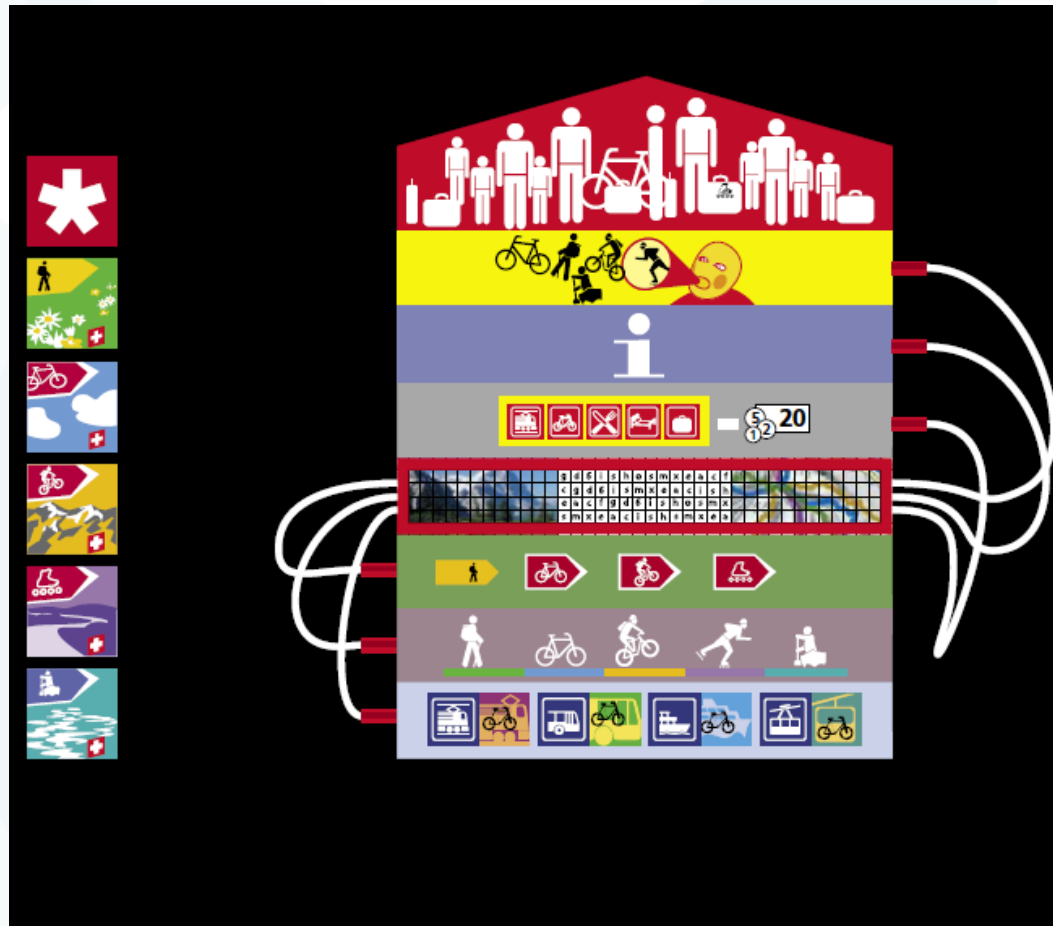
www.ecf.com

Challenges and solutions to founding an NECC

Structure matters!

- Centralised countries – easier to bring together all organisation
- Countries with federal system – harder to bring all stakeholders together

NECC: Switzerland



Challenges and solutions to founding an NECC

Size matters!

- Small countries – easier to bring together all organisations
- Big countries – harder to bring all stakeholders together

NECC: France



Challenges and solutions to founding an NECC

Level of development matters!

- More developed countries – easier to bring together all organisations
- Less developed countries – harder to bring all stakeholders together

NECC: Czech Republic



nadace
partnerství

| LIDÉ A PŘÍRODA



Ceskojede.cz

Content

1. The role and importance of EuroVelo and the needs of cycle tourists
2. The organization of EuroVelo
3. How we manage (change) EuroVelo, the European cycle route network?
4. The EuroVelo toolkit

3. How we manage (change) EuroVelo, the European cycle route network?

- Objectives, background
- Types of actions
- Procedure and timetable
- Challenges

Objectives, background

- ECF objective, to complete the EuroVelo Network by 2020. In addition, we work hard to encourage continued quality improvement on the routes.
- ECF imposes stringent quality criteria on the proposers of new routes and it is therefore right that existing routes should be under pressure to proceed at a similar level.



Types of actions

Major actions – ECF decides involving the NECC/Cs

Minor actions – NECC/C decides informing ECF



Types of major actions

The approval of the ECF is required for the following actions:

- AR: Add new route (with new number) to the EuroVelo network
- DR: Cancel / delete an existing numbered route from the EuroVelo network
- AS: Add a new major section / extension to an existing route
- DS: Cancel / Delete a major section of an existing route
- MC: Major change to an existing route (alter the itinerary of the route)
- CN: Change the number of an existing route



Types of major actions

The approval of the ECF is required for the following actions:

- AR: Add new route (with new number) to the EuroVelo network
- DR: Cancel / delete an existing numbered route from the EuroVelo network
- AS: Add a new major section / extension to an existing route
- DS: Cancel / delete a major section of an existing route
- MC: Major change to an existing route (alter the itinerary of the route)
- CN: Change the number of an existing route



Procedure and timetable for considering new routes and major extensions

Step	Actor	Status	Current Application Period	Next Application Period
I. Submission of draft proposal (including the information types 1, 3 and 8 listed in the previous table)	Applicant	No title	Closed	Ongoing until 30/06/16
II. Informal review and feedback	ECF	No title	Closed	Within 3 months of receipt of proposal
III. Submission of the detailed application	Applicant	Proposed route	31/12/13	31/12/16
IV. Decision at the first level control	ECF	Candidate route	30/06/14	30/06/17
V. Implementation. Refer to EuroVelo in relevant material (signposting, promotion, etc.)	Applicant / ECF	Candidate route	Until 30/06/15	Until 30/06/18
VI. Final confirmation of the decision.	ECF	Accepted candidate	31/12/15	31/12/18
VII. Publication of new EuroVelo documents by ECF	ECF	EV route	30/06/16	30/06/19

Adapted from the Central EuroVelo Route Coordination Rules (September 2013)

Challenges of major actions

- Some new route ideas are not prepared, mature enough or too short (less than 1000km) – postpone/merge them
- Nobody applied to delete a major route or section
 - ECF took the initiative
 - call for actions
- **NECC/C don't always** have the same opinion – ECF looks for compromises



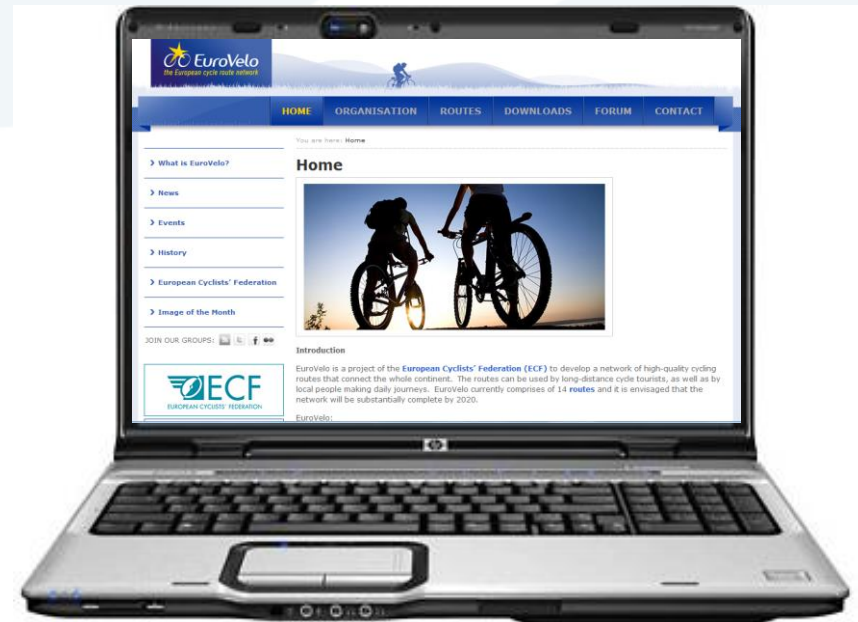
Content

1. The role and importance of EuroVelo and the needs of cycle tourists
2. The organization of EuroVelo
3. How we manage (change) EuroVelo, the European cycle route network?
4. The EuroVelo toolkit

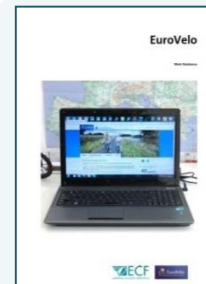
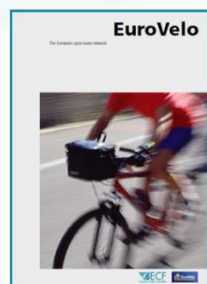
EuroVelo tools for professionals - web

Up-to-date and easily accessible information on the European level:

- www.eurovelo.org for professionals
- EuroVelo newsletters for professional



EuroVelo tools for professionals - manuals



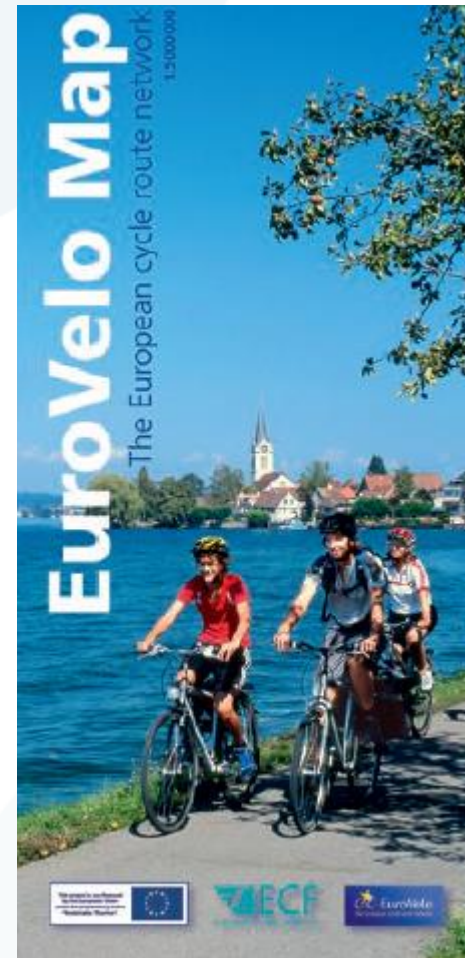
EuroVelo tools for professionals – lobby tools

Complete EuroVelo by
2020!

Complete inclusion /
reference on EuroVelo
in TEN-T



EuroVelo tools for cyclists - map



www.ecf.com

EuroVelo tools for cyclists – EuroVelo.com

EuroVelo
the European cycle route network

Search Site

English Français Deutsch

Home EuroVelo Routes Countries ECF Donate Our offers

Discover Europe by bike!

Welcome to the EuroVelo.com – the website for people interested in cycling in Europe.

EuroVelo is a network of 15 long-distance cycle routes connecting and uniting the whole European...

f t y

EuroVelo tools for cyclists – app and social media



Twitter



Facebook

Unlock the potential of EuroVelo together!



Thank you for listening!

For more information

www.ecf.com www.eurovelo.org
www.eurovelo.com